

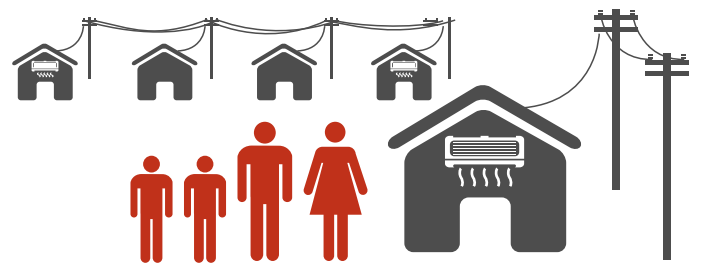
# YOUR ELECTRICITY GRID

**The Electricity Grid has been called the 'world's largest machine' – an integrated, dynamic system.**

With Australian households using more appliances in their daily lives for communication, comfort and convenience the electricity grid plays an essential part in our lives.

**10,561,578 customers\***

Your Grid provides energy to virtually every household and business in Australia through transmission and distribution networks. Reliable, cost-effective power supply is a vital input to Australian business, industry and communities, supporting economic growth and employment.

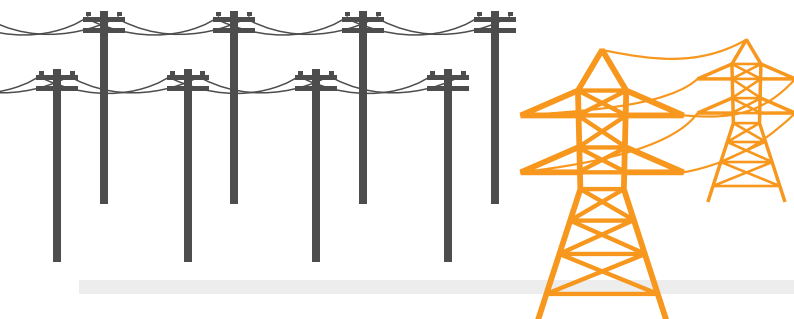
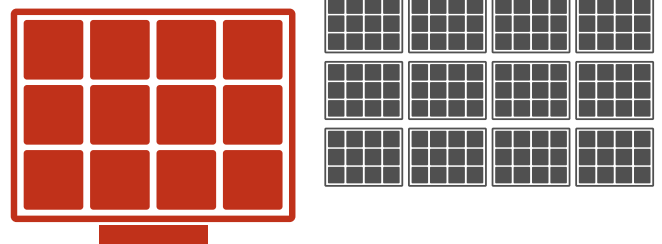


**34,374 workers**

Your Grid employees provide essential frontline and supporting services to customers 24x7, 365 days a year. They often work in extreme conditions during rapid emergency responses to major events, such as fires and storms to minimise customer interruptions.

**1,320,423 connected Solar Panels**

Your Grid is rapidly connecting new technologies, while protecting safe, reliable and affordable supply to other customers. Australia leads the world in the uptake of grid-connected solar panels, 'reversing' energy flows in some locations. Most solar customers rely on the Grid to sell excess energy and for backup supply.



**917,676 kms of lines**

Your Grid includes over \$84 billion in electricity assets providing the backbone of our economy and community. Long term investments are made based on consumer engagement to meet dynamic market needs, incorporate new technologies and support demand response.

**99.95% reliability**

Your Grid provides an exceptionally reliable service adapting in real time to millions of changing demand and supply signals. Customers benefit from the reliability, continuous supply, 'start-up' power support, power balancing and power quality provided by the grid.

